



## iBootBar Firmware Upgrade Procedure

### GENERAL DESCRIPTION

This manual explains the procedure to upgrade the firmware of an iBootBar. This manual and figures, (screenshots) assume a default ip address of 192.168.0.254 and default location for the program files as c:\dataprobe\iBB.

### BEFORE YOU BEGIN

Upgrading the iBootBar will result in changes to the power outlets. Remove the iBootBar from service prior to upgrading the firmware.

The PC running the iBootBar upgrade program must be on the same subnet as the iBootBar(s).

Upgrading the iBootBar requires that Upload Enable is set to yes. Use `set upload enable yes` command prior to attempting an upgrade.

Upgrading the iBootBar may result in reset to original factory defaults. See Set Factory Default on Page 4. This will include the default IP address of 192.168.0.254. If you need access to the iBootBar subsequent to the firmware upgrade, make sure in advance that you can access this IP Address.

If upgrading from Version 1.2, it is possible to save configuration settings and restore them to the upgraded unit. Review Section **UPGRADING FROM 1.2 TO 1.3** on Page 4 if applicable.

*Technical Support Hotline: (201) 934-5111*

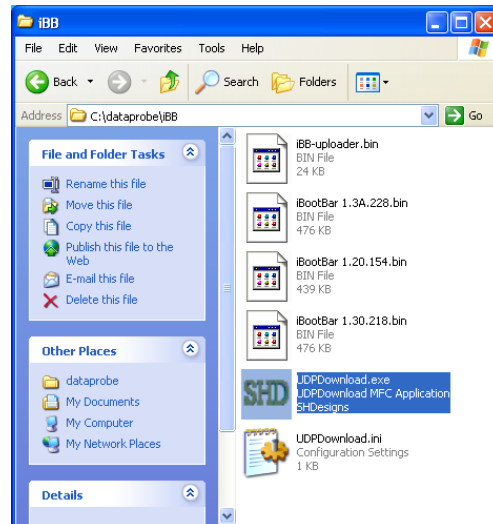


**1B Pearl Court / Allendale, New Jersey 07401**  
**TEL: 201-934-9944**      **FAX: 201-934-9090**  
Website: [www.dataprobe.com](http://www.dataprobe.com)      Email: [tech@dataprobe.com](mailto:tech@dataprobe.com)

## STEP BY STEP UPGRADE PROCEDURE

### 1. Run UDPDownload.exe

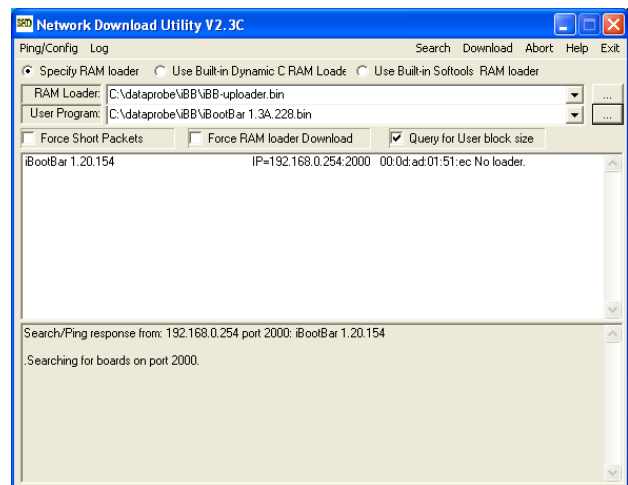
Locate the UDPDownload.exe program in the C:/dataprobe/iBB directory, or other directory if applicable. Install this program from the CD included with the iBootBar, or from Dataprobe's website at [dataprobe.com/ibootbartools.html](http://dataprobe.com/ibootbartools.html)



### 2. Load the RAM Loader and Firmware Image file.

Two files are required by the Upgrade utility to function. The Ram Loader file is **iBB-uploader.bin**. If this file is not indicated on the top address bar of the upgrade program, click on the ellipsis ( ... ) button and browse for the file.

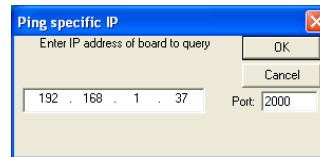
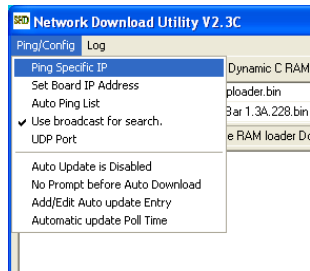
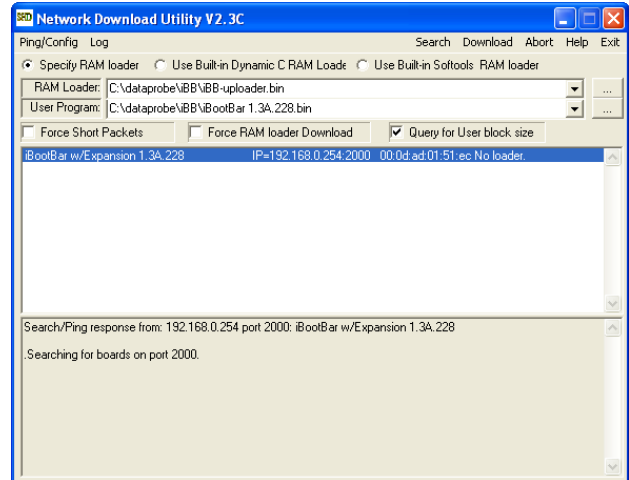
The iBootBar firmware image file is designated on the second address line. Check that this file is designated with the firmware version you intend to upgrade to. If it is not, click on the ellipsis button and browse for the desired file.



### 3. Target the iBootBar for Upgrade

The center panel of the upgrade program displays all iBootBars that were automatically discovered at the start of the program. If the iBootBar to be upgraded is shown, highlight that unit.

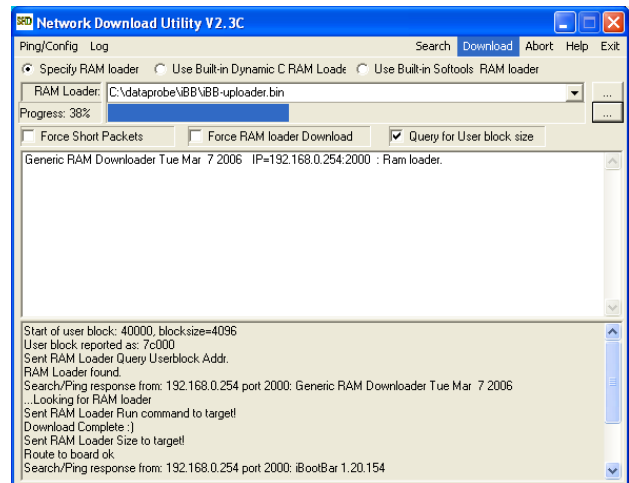
If the intended iBootBar is not shown, click on Ping/Config...Ping Specific IP then enter the IP address of the iBootBar. If the iBootBar is properly located, it will appear in the listing of available iBootBars.



### 4. Start Download Process

Click on Download from the Menu Bar. The RAM Loader will download quickly, then the firmware image will download. Upon completion, the iBootBar will reboot and the process is complete.

If the upgrade was a minor release, the original settings in the iBootBar will be maintained. If the upgrade was a major release, all the settings will be returned to Factory Default for the new release. Please see Factory Defaults section on page 4.



## FACTORY DEFAULTS:

Major upgrades require a reset to factory defaults. Major upgrades are indicated by a change in the first decimal place of the version number. From 1.2.227 to 1.3.183 is a major upgrade and requires a reset to factory defaults.

Versions 1.3 and above automatically determine when a reset to factory defaults is required. This will happen during the upgrade process while the iBootBar is rebooting at the end of the upgrade procedure. If upgrading from version 1.2 to 1.3 it is possible to save the configuration to a file prior to upgrade, convert it and re-install it after the upgrade. Refer to section **UPGRADING FROM 1.2 TO 1.3** Below.

Upgrading an iBootBar to any version less than 1.3 requires manually resetting the factory defaults. This requires serial port access. Access the serial port and issue the `set factory default ts` command. Refer to the iBootBar manual for additional instructions.

## UPGRADING FROM 1.2 TO 1.3

Prior to upgrading from version 1.2 to version 1.3, it is possible to save all configuration parameters to a file, and use that file to restore the parameters in an iBootBar with version 1.3. Follow the following steps:

1. If you have not already done so, download and install version 1.0 of the iBootBar Setup and Control Utility. This file is available at [dataprobe.com/ibootbartools.html](http://dataprobe.com/ibootbartools.html)
2. Access each iBootBar version 1.2 and download the configuration to the Setup and Control Utility.
3. Save the configuration to a file. Name the file in a way that will be easy to identify which iBootBar is associated with the file.
4. Repeat for each iBootBar as required
5. Upgrade each iBootBar as described in this document.
6. Download and install version 1.3 of the iBootBar Setup and Control Utility. It is also located at [dataprobe.com/ibootbartools.html](http://dataprobe.com/ibootbartools.html)
7. Open the Setup and Control Utility version 1.3
8. Click on File...Open... then select the previously saved XXX.ibbcfg file saved from Step 3.
9. A warning will pop up indicating that the file is not current, and offer to convert the file.
10. Resave the file using File...Save As...
11. Locate each iBootBar and upload the appropriate file as required.



## TECHNICAL SUPPORT

Dataprobe Technical Support is available 8:30AM to 5:30PM ET to assist you in the installation and operation of this product. To obtain Technical Support call our Tech Support Hotline at 201-934-5111, or Email us at [tech@dataprobe.com](mailto:tech@dataprobe.com).