

Using XMODEM and the Startup Menu

The switch software can be downloaded via the Startup menu accessed during the boot process. The boot process can be initiated by cycling power or by commanding a reload from the CLI (command line interface).

1. Connect to the serial port (default setting 9600 baud, 8 data bits, no start bits, 1 stop bits) and enter the CLI mode. The following prompt is displayed:

```
console>
```

2. Type **enable** to enter the enable CLI mode:

```
console> enable
console#
```

3. Type **reload**. The following message is displayed:

```
console# reload
```

```
This command will reset the whole system and disconnect your current
session. Do you want to continue (y/n)[n]?
```

4. Type **y**. The switch reboots.
5. Press **<Return>** or **<Esc>** within 2 seconds. The **Startup** menu is displayed.

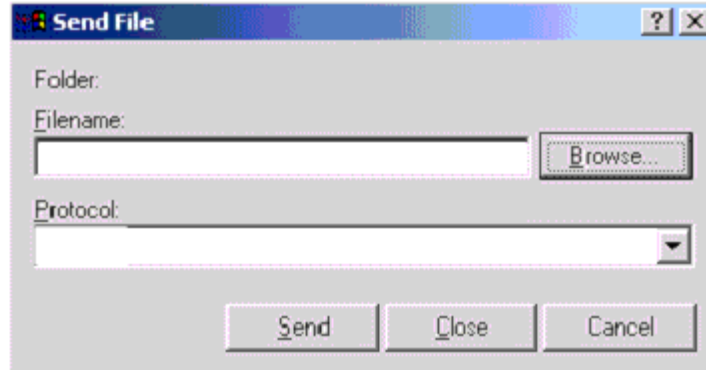
```
Startup Menu
```

```
[1] Download Software
[2] Erase Flash File
[3] Password Recovery Procedure
[4] Enter Diagnostic Mode
[5] Set Terminal Baud-Rate
[6] Stack menu
[7] Back
Enter your choice or press 'ESC' to exit:
```

6. Type **1**. The following prompt is displayed:

```
Downloading code using XMODEM.
```

7. Using any VT100 emulator (Windows HyperTerminal shown here), select the download file option. The **Send File** window is displayed. Click the **Send** button.



8. Enter the path and filename for the software (5324-10047.ros)
9. Ensure the protocol is defined as **Xmodem**.
10. Click **Send**. The software is downloaded.
11. Once the download is complete (this may take an hour or longer), the device reboots automatically.